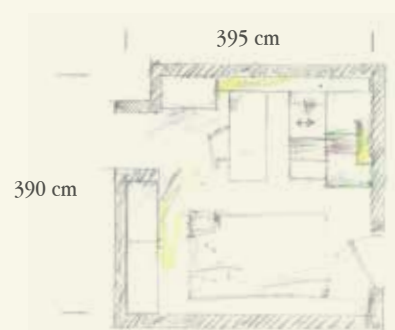
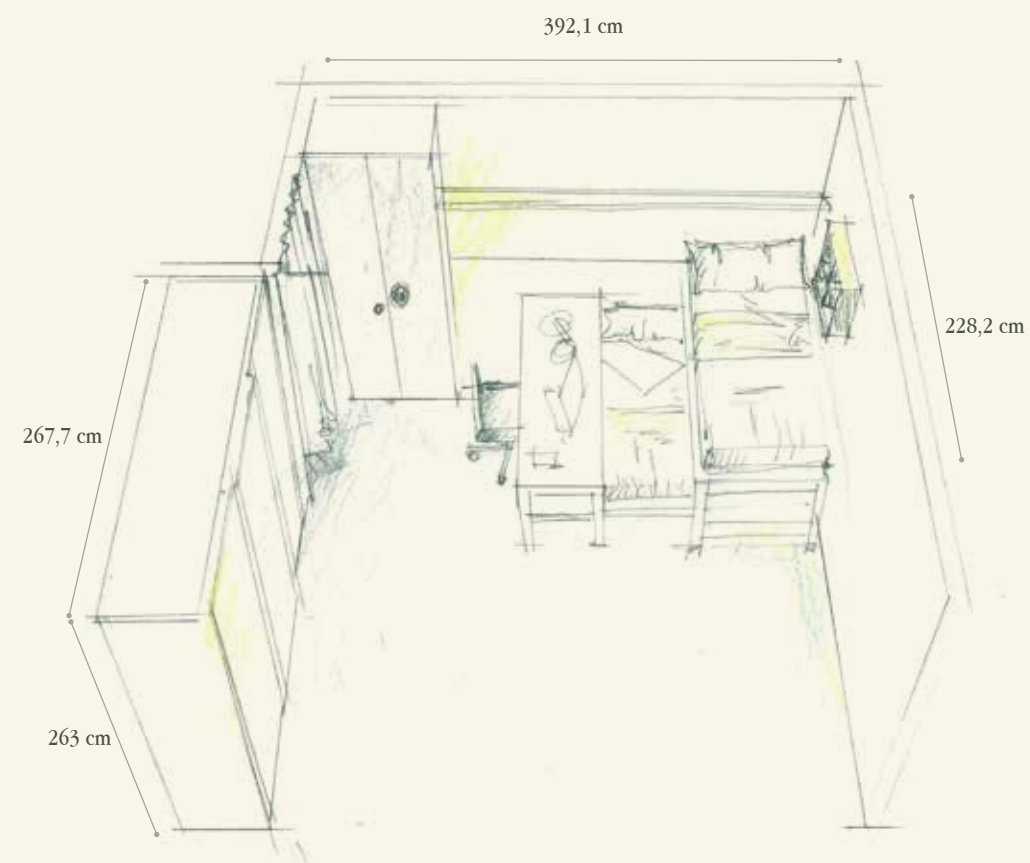
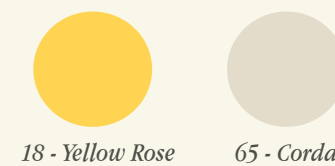


920

BEDROOM



Finiture / Finishing



18 - Yellow Rose

65 - Corda

NF Corda
Cord-colour

Q.TA/Q.TY	COD	L	P	H	DESCRIZIONE/DESCRIPTION
ZONA ARMADI / WARDROBEDS WALL					
1	AR37D2	261.8	65	263	Armadio ad ante scorrevoli con stampa digitale, 6 tubi appendiabiti e 3 ripiani interni <i>Wardrobe with sliding doors and digital print, 6 closet rods and 3 internal shelves</i>
1	ART8	2,8+2,8	56,8/60,5	261	Coppia fianchi di chiusura - <i>Couple of finishing end sides</i>
1	B151	85,6	59	261	Colonna armadio con 2 ante, 4 cassetti e maniglie PX19 <i>Wardrobe column with 2 doors, 4 drawers and handles PX19</i>
1	FN88	3,2+3,2	59	261	Fianchi di chiusura - <i>Finishing end sides</i>
ZONA LETTI SCORREVOLI / SLIDING BEDS WALL					
3	BF46	100	2/2,5	197	Pannello verticale a muro verticale con livellatori - <i>Vertical wall panel with level adjusters</i>
1	TF44	213	65	76	Scrivania scorrevole - <i>Sliding desk</i>
1	BF72	100	200	32	Letto inferiore scorrevole - <i>Lower sliding bed</i>
1	BF76	100	226	110	Letto superiore scorrevole - <i>Upper sliding bed</i>
3	GS86	300			Guida per scorrevoli in alluminio - <i>Aluminium rail for sliding elements</i>
3	MP97	100	56,5	22	Pedana con cassetto e maniglia PX19 - <i>Base with drawer and handle PX19</i>
1	SE76	65	65	85,5/98,5	Sedia con ruote regolabile in altezza con scocca in legno e schienale in tessuto, basamento in metallo verniciato grigio <i>Chair on wheels adjustable in height with wooden seat and back in fabric, base in grey varnished metal</i>
1	SE79	47	39	6	Seduta imbottita - <i>Upholstered seat</i>
1	ET88				(TIK032A - TIK032D) Stickers - <i>Stickers</i>
1	ME25	300	33,4	2,8	Mensola con reggimensola a scomparsa - <i>Shelf with concealed bracket</i>
1	MP55	56	20	56	Libreria pensile - <i>Wall bookcase</i>