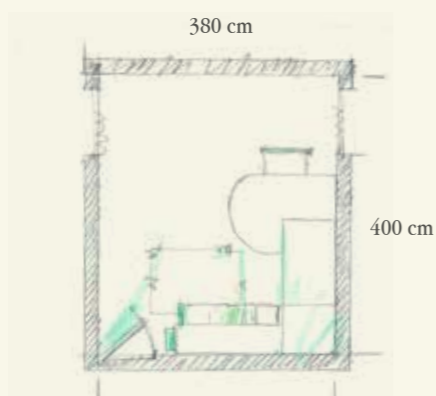
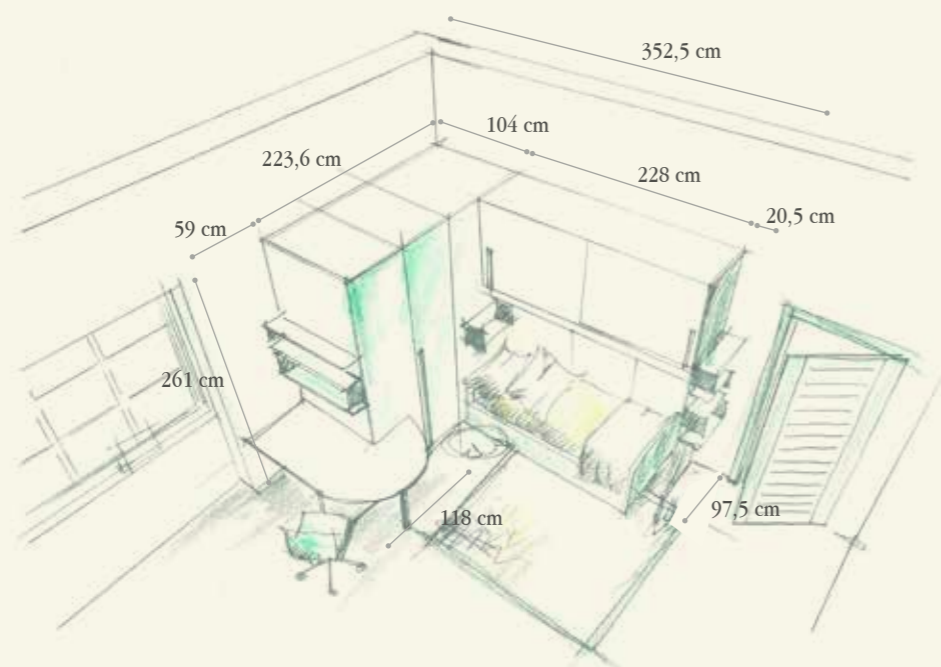
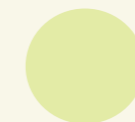


949

BEDROOM



## Finiture / Finishing



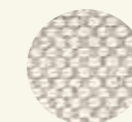
02 - Verde Pastello



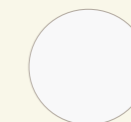
03 - Verde The



04 - Verde Lime

N3 Olmo Calce  
Whitewash Elm

T14

NB Nobilitato Bianco  
White Melamine

| Q.TA/Q.TY   | COD    | L     | P    | H         | DESCRIZIONE/DESCRIPTION  |
|---|--------|-------|------|-----------|--|
| <b>PARETE CABINA - SCRITTOIO / CLOSET-DESK WALL</b> |        |       |      |           |  |
| 1   | KCA10  | 223,6 | 104  | 261       | Cabina Spring DX tipo 5 con 2 tubi appendiabiti, 1 ripiano ad angolo e maniglia a incasso PX29LL h. 120 + maggiorazione per anta e pannello A laccato e stampa digitale su pannello fisso B (senza luce)<br><i>Spring Closet R type 5 with 2 closet rods, 1 corner shelf and recessed handles PX29LL b. 120 + supplement for lacquered door and panel A and digital print on fixed panel B (without light)</i> |
| 3   | KCR22  | 100   | 46,2 | 2,5       | Ripiani lineari - <i>Linear shelves</i>  |
| 1   | KK9G   | 85,4  | 47   | 68        | Cassettiera interna a 3 cassetti e 2 ripiani - <i>Internal chest of drawers with 3 drawers and 2 shelves</i>   |
| 3   | VS26   | 100   | 20,5 | 20        | Mensole T-Box - <i>T-Box shelf</i>   |
| 1   | TN67   | 4     | 59   | 73,2      | Fianco lineare per piano scrittoio - <i>Linear side for desk</i>   |
| 1   | MY04   | 104   | 59   | 4         | Piano lineare per scrittoio con angolare di sostegno<br><i>Linear top for desk with supporting angle bracket</i>   |
| 1   | MY04   | 118   | 59   | 4         | Piano sagomato per scrittoio + maggiorazione per sostegno<br><i>Shaped top for desk + supplement for support</i>   |
| 1   | GH63   | 5     | 5    | 73,2      | Tubo quadro a pavimento con piastra e piede - <i>Floor square tube with plate and foot</i>   |
| 1   | SE72   | 65    | 65   | 77,5/90,5 | Sedia con ruote regolabile in altezza scocca in legno e basamento in metallo verniciato grigio<br><i>Chair on wheels adjustable in height with wooden seat and base in grey varnished metal</i>  |
| 1   | SE79   | 47    | 39   | 6         | Seduta imbottita sfoderabile - <i>Upholstered and removable seat</i>   |
| <b>PARETE LETTO / BED WALL</b>                      |        |       |      |           |  |
| 1   | P903   | 220   | 59   | 165       | Ponte lineare "Spazio 5" con ante scorrevoli, tubi appendiabiti, pannello di finitura sottoponte e maniglia PX27LL + maggiorazione per stampa digitale<br><i>"Spazio 5" linear bridge with sliding doors, closet rods, underbridge finishing panel and handles PX27LL + supplement for digital print</i>   |
| 1   | FN38   | 2     | 59   | 261       | Fianco laterale di sostegno - <i>Supporting side</i>   |
| 4   | VS25   | 56,5  | 20,5 | 20        | Mensole T-box - <i>T-Box shelf</i>   |
| 1   | ML84   | 50    | 25   | 24        | Mensola in metallo con schienale - <i>Metal shelf with back</i>  |
| 1   | LR36   | 203,5 | 95   | 62,1      | Letto Lory inferiore scorrevole sp.4 con cassetti su guide e maniglie PX26LL<br><i>Lory lower sliding bed tb.4 with drawers on rails and handles PX26LL</i>  |
| 1   | KZT53N | 105   |      |           | Luce led a incasso con trasformatore e interruttore a sfioro<br><i>Embedded led light with transformer and touch switch</i>  |